



GSR-GLOBE SOURCE

Outline – Variable directivity Sound Source



Outline Professional Audio
Flero (Bs) Via Leonardo da Vinci 56 info@outline.it



Outline – Variable directivity Sound Source

The Outline **GLOBE-SOURCE-RADIATOR** is an adjustable multi directivity sound radiator, intended for use in acoustical measurements for which not only an uniform spherical sound radiation is required, but also a desired directivity, to match various sound sources, from speech to any other acoustic instruments or devices.

The Outline **GSR** complies to ISO 3382, ISO 140-3, ISO 354 and DIN 52210 standards.

The **GSR** can be mounted on its support stand or hanged using the eyebolt supplied and fitted in the receptacle.

It can also be safely installed on the floor, using the flat support plate supplied.

A detachable handle is been provided to



Outline – Features

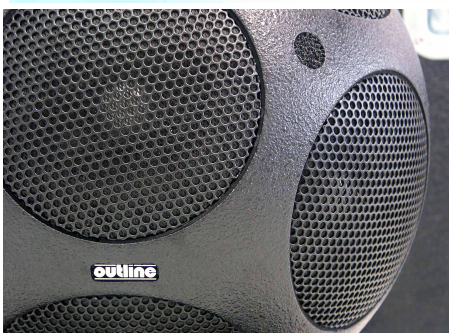
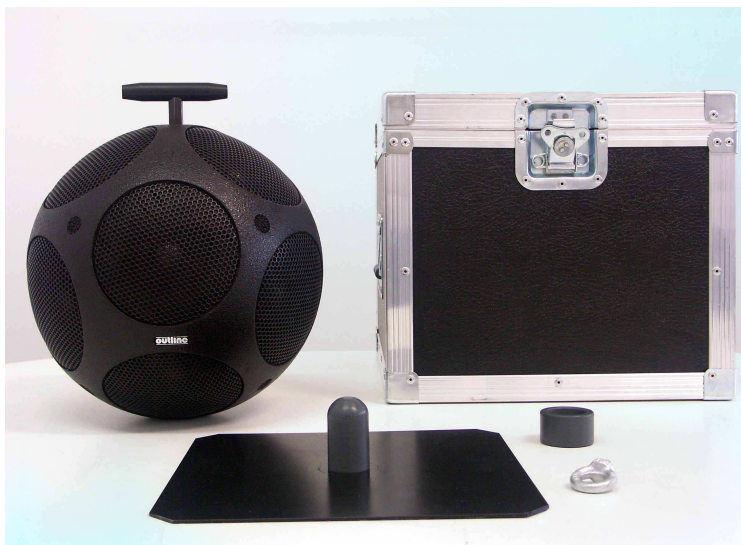
Best price/performance ratio in the industry - state of the art performance and optimum geometric design based on spherical 12 speakers shape with lowest dimensions and weight. Compliant to ISO 3382, ISO 140-3, ISO 354 and DIN 52210 standards.

Wide operating frequency range: 90 - 9000 Hz / 100 8000 1/3 octave center frequency bands.

Highest maximum summed sound power level:

130.3 dB ref 1pW

The user-friendly detachable handle can be replaced by a universal eyebolt for safe hanging. Includes lightweight protective carrying case. Built-in stand receptacle. Two-year warranty.



facilitate handling. The Outline **GSR** is supplied in a strong lightweight protective flight case, which can also hold the special 4-channel

DSP controlled power amp system. This makes it very easy to transport the **GSR** along with its basic accessories.

Outline – Main Accessories

The Outline GSR has many very useful accessories; some of them supplied at no charge.



A SPK8x2.5-5
Cable Assembly with 8-pole
Speakon connector both ends



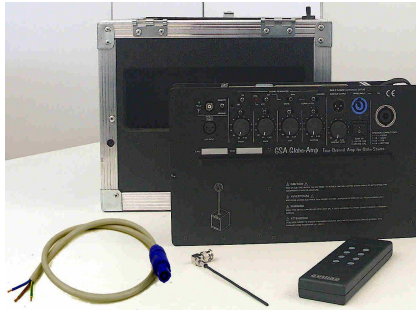
A FC-GSC
Carrying Case (Ready to allocate
dedicated 4 CH Amp.)



**A SP-GSR- +
W Golfare M10**
Handle +Floor Stand+
Eyebolt



A STAND 2
Adjustable stand d=35 mm



O GSA + O GSA-TX
Four Channels Globe Amp.+
AC Cable + 8 CH transmitter



O GSS-SP
Dedicated Powered
Subwoofer System



A GST – 3 WHEELS Special Kit



A SCAP-Global
Protective Cap for GSS-SP



A STAND-M20
Adj. Stand for GSS-SP



A SPK8x2.5-2.2
Cable Assembly with 8-pole
Speakon connectors for GSS-SP



A XLR-MIC-10
XLR Signal Cable 10 m



A TROLLEY-5
Trolley for GSS-SP



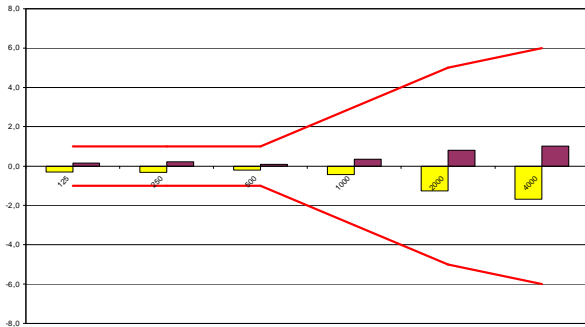
Outline – Technical Specifications

General

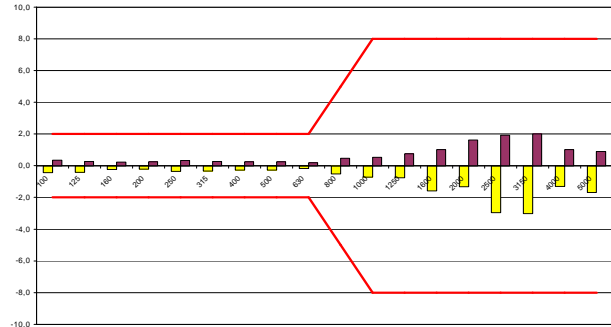
The Outline GSR-Globe is compliant with ISO 3382, ISO 354, ISO 140-3 and DIN 52210 stds.

Parameter	Typ.	Max	Unit	Condition
Channels	4		N°	Standard Globe Source speakers connection.
Nominal impedance	4		Ω	For each of the four channels
Power handling	150	225	W	Continuous for each channel
		450	W	Program for each channel
		900	W	Continuous total power four channels
		3600	W	Calculated total Peak power four channels
Operating frequency range	90	9000	Hz	Wide band
	100	8000	Hz	Third octave frequency bands
Sound power level	128		dB re 1 pW	Pink noise continuous output (AES2-1984-(r1997)), summed over third octave bands from 90 - 900 Hz, using 150 WRMS undistorted power per channel.
Max Sound power level		130	dB re 1 pW	Pink noise, summed over third octave bands from 90 - 9000 Hz equalized, using 570 WRMS undistorted power per channel.
Power Compression	0.1	0.3	dB	After two hours maximum power driven
Max Height with tripod		230	cm	Globe centre
Diameter	31		cm	Diameter.
Weight	13		kg	Globe Source speaker with Handle
	3.5		kg	Adjustable support stand
	8		kg	Flight Case with Floor Stand and Eyebolt
Connector	Eight-pole Neutrik Speakon both end socket			

Directivity



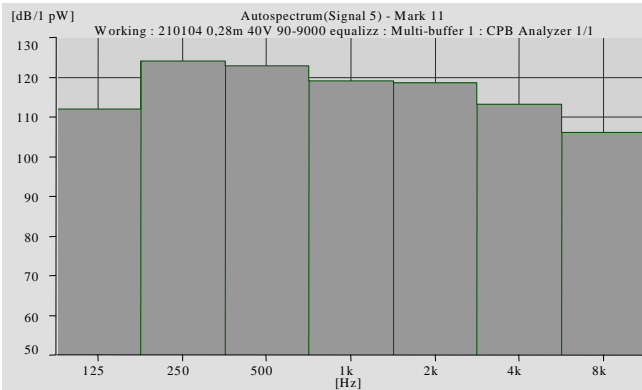
Globe- Source octave Directivity[dB]
Red lines indicate allowed area.



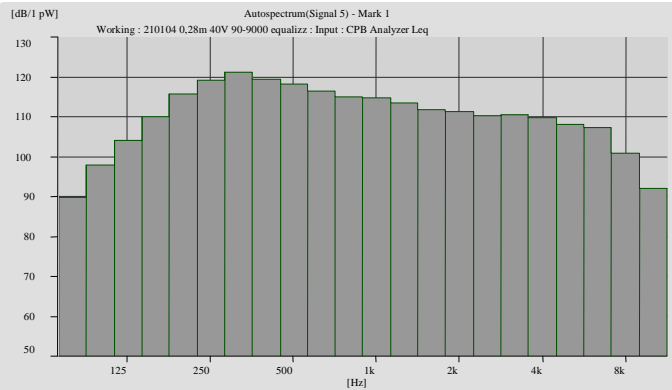
Globe-Source third octave Directivity[dB]
Red lines indicate allowed area.

Sound Power Level

Measured per third octave frequency band, using pink noise and 570WRMS power.



Outline full octave Sound Power Level [dBpW]



Outline third octave Sound Power Level [dBpW]



Outline – Main Items

For the Accessories look at the dedicated page above.

GSR Globe-Source - Wide Band Isotropic Radiator including 5 m. multicable with NL8 Speakon, Handle, Floor Stand and Eybolt.

FC-GSC Globe-Case - Flight Case for Globe-Source & Globe-Amp

Stand 2 + GST 3 Wheels KIT - Stand for Globe and optional Special Wheels

GSS-SP Global-Sub - 500 WRMS - PWM - Self-powered Band Extension Radiator for Globe-Source - 132 dB Peak – Optional Trolley & Protective Cap

GSA+GSA-TX Globe-Amp^o – DSP-controlled PWM 500 W CH - Four Channel Amp for Globe-Source Radiator – Separate 4CH Level Controls - Internal Pink & White noise generator - Signal Correlated/Uncorrelated Switch – Polarity Switch – Built in Radio Remote Control Receiver – Radio Remote Control Transmitter Supplied –

^oNote: due to distortion figure GSA PWM power amp can drive Globe Source at 125.5 dB max summation level. For max Globe Source Performances Outline T44 proprietary settled power amp. is suggested.

*Additional cable (up to 99 meters).

All specifications are subject to change without notice or obligation.

For further information, please contact us info@outline.it